

FRONT VIEW OF PANEL

NOTES:

1. ALL MODULES ARE TA4000 SERIES PLUG-IN. REFER TO SERIALIZED NAMEPLATE ON SIDE OF MODULE FOR INPUT/OUTPUT SPECIFICATIONS. PANEL SHOWN IS APPLICABLE TO DCT, ACT AND ACM ASSEMBLIES.

2. TERMINALS ARE #6-40 SCREW TYPE BARRIER STRIP.

3. FOR DC SIGNALS & AC VOLTAGE SIGNALS, TYPICAL VALUES FOR "R" ARE:

4/20mA = 50 OHMS, 10/50mA = 20 OHMS
1/5 VDC = EXCESS OF 1 MEGOHM

FOR AC CURRENT SIGNALS, "R" IS OMITTED & A TWO WINDING TORROID CURRENT TRANSFORMER MOUNTED UNDER THE PC BOARD IS USED. THE PRIMARY WINDING IS CONNECTED ACROSS THE INPUT TERMINALS & THE SECONDARY WINDING PROVIDES AN ISOLATED INPUT TO THE FUNCTION MODULE. PRIMARY WINDING RESISTANCE IS LESS THAN 0.1 OHM.

4. TYPICAL DC ANALOG OUTPUT SPECIFICATION IS 0/550 OHMS LOAD ON A 4/20mA BASIS OR 10mA MAXIMUM OUTPUT LOAD ON A 1/5 VDC BASIS.

5. 24 VDC AUXILIARY POWER OUTPUT MUST BE LESS THAN 50mA. 24 VDC (+) & (-) ARE ISOLATED FROM SIGNAL INPUT & OUTPUT COMMONS.

6. USE PCB #7714 (ALL SIGNALS EXCEPT AC CURRENT) PCB #7795 (AC CURRENT)

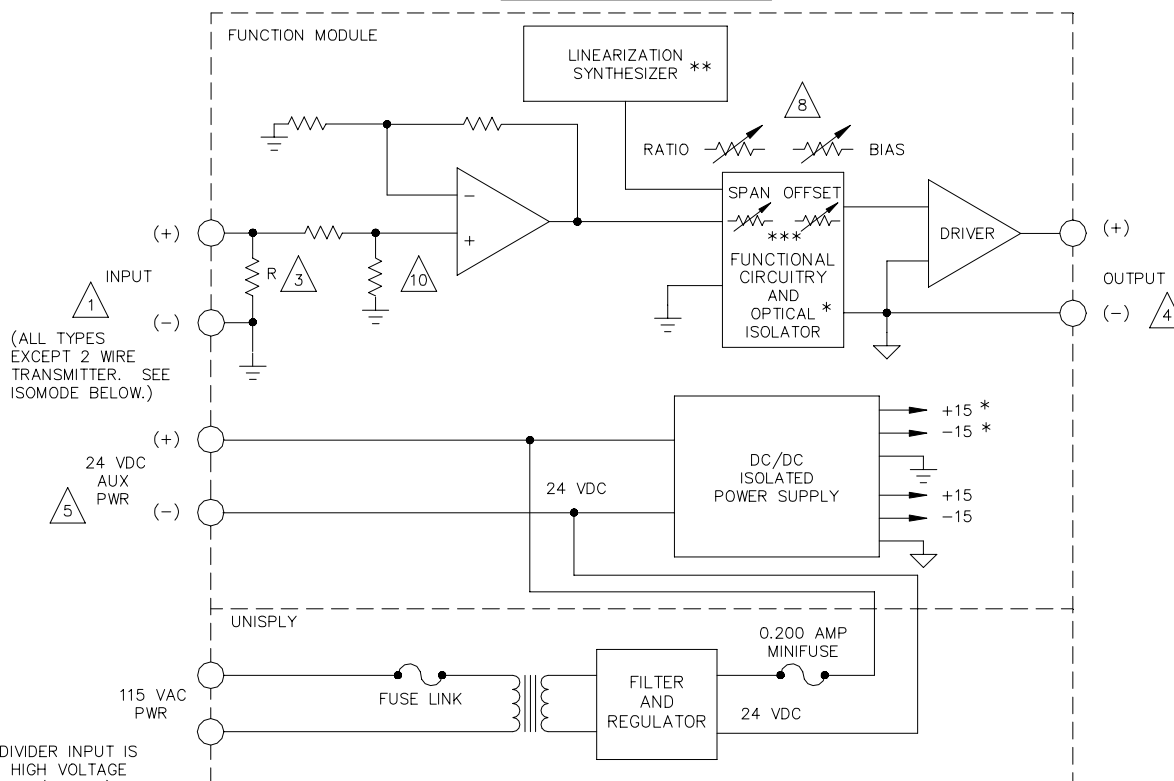
7. EQUIPMENT MUST HAVE GOOD VENTILATION. AMBIENT TEMPERATURE NOT TO EXCEED 50° C.

8. APPLIES TO TA4028 RATIO CONTROLLER AND BIAS POTENTIOMETER ADJUSTMENTS MOUNTED ON FRONT FACE OF MODULE. ADJUSTMENTS ARE OPTIONAL BLIND 15 TURN POTENTIOMETER OR DIAL.

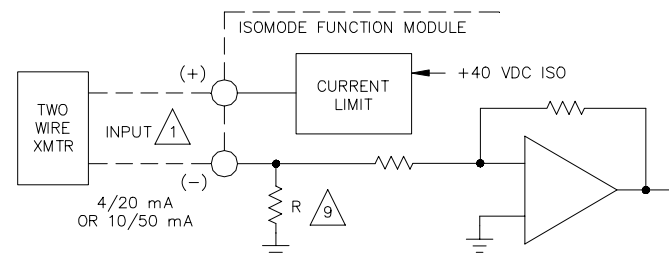
9. THE VALUE OF "R" DEPENDS ON THE SPECIFIED INPUT SIGNAL. TYPICAL VALUES FOR "R" ARE:
4/20mA = 50 OHMS, 10/50mA = 20 OHMS
1/5 VDC = EXCESS OF 1 MEGOHMS

10. VOLTAGE DIVIDER INPUT IS USED FOR HIGH VOLTAGE SIGNALS (ie 0/120VDC) TYPICALLY REDUCING SIGNAL TO 0/2 VDC. INPUT IMPEDENCE IS TYPICALLY 1 Megohm.

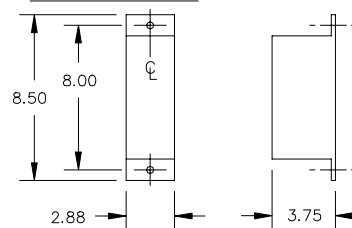
SIMPLIFIED SCHEMATIC



* OMITTED FOR NON-ISOLATED MODULES
** USED WITH TA4000 X^N ONLY
*** OFFSET & SPAN ADJUSTMENTS PROVIDED. (BLIND)



OUTLINE DIMENSIONS



SIGNATURE	DATE
DRAWN BY KM	12/28/76
CHECKED BY LW	12/28/76
APPROVED BY JHL	12/28/76
APPROVED FOR PROD.	
CONTRACT NO.	
PCB-7714 EXCEPT AC CURRENT	
PCB-7795 FOR AC CURRENT	
PCB-8960 FOR 4007	

AGM ELECTRONICS, INC.

TUCSON, ARIZONA

WIRING & SCHEMATIC DIAGRAM

DC/DC, AC/DC TRANSMITTER

TA4000-DC/DC, TA4001-AC/DC,
TA4028 RATIO CONTROLLER, TA4006-X^N, TA4007

CODE IDENT NO.	SIZE	PART NO.	REV
	A	WSD-C20162-2	F
SCALE NONE	WT		SHEET 1 OF 1